

ISO 2768-1 MEDIUM

from 0,5	over 3	over 6	over 30	over 120	over 400	over 1000	over 2000
up to 3	up to 6	up to 30	up to 120	up to 400	up to 1000	up to 2000	up to 4000
±0,1	±0,1	±0,2	±0,3	±0,5	±0,8	±1,2	±2

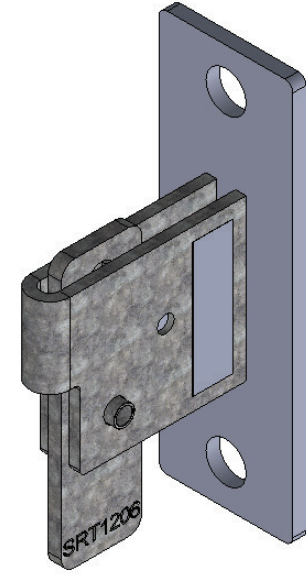
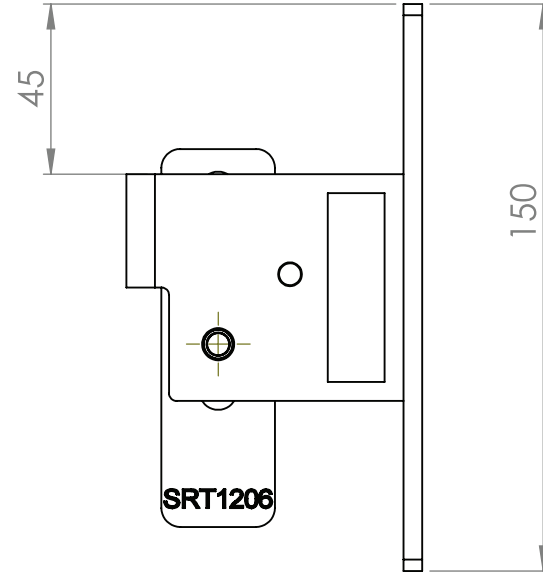
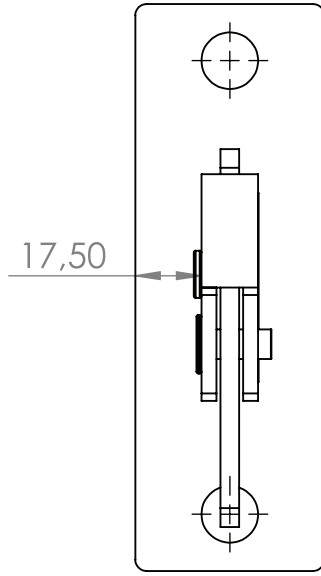
AKŞI BELİRTİLMEDİĞİ SÜRECE:
BOYUTLAR MİLİMETREDİR/
OTHERWISE DIMENSIONS
MILLIMETERS
YÜZEY CİLASI/SURFACE FINISH:
TOLERANSLAR/TOLERANCES: ISO 2768-1 MEDIUM
DOĞRUSAL/LINEAR:
AÇISAL/ANGULAR:

KESKİN KENARLARI PAHLAYIN VE KIRIN	TARİH/DATE	REVİZYON/REVISION
RENK:	_/_/	0

	İSİM/NAME	İMZA/SIGNATURE	TARİH/DATE	SIRADAKİ İŞLEM/ NEXT OPERATION
ÇİZEN/DRAWN	M.SÜLEKOĞLU		././...
DENET./APPROVAL	Eyüp BAŞTAK			
ÜRET./PRODUCTION	Ünsal SİVRİ			MALZEME/MATERIAL:
KALİTE/QUALITY	İsmail BAŞTAK		
G.M./G.M.	Şadi BAŞTAK			AĞIRLIK/WEIGHT:



RESİM NO./DWG NO: 3-100 TR	BAŞLIK/TITLE: Barrier 2.6 TR	A4
ÖLÇEK/SCALE:	SAYFA/PAGE:1	



ISO 2768-1 MEDIUM

from 0,5	over 3	over 6	over 30	over 120	over 400	over 1000	over 2000
up to 3	up to 6	up to 30	up to 120	up to 400	up to 1000	up to 2000	up to 4000
±0,1	±0,1	±0,2	±0,3	±0,5	±0,8	±1,2	±2

AKSİ BELİRTİLMEDİĞİ SÜRECE:
BOYUTLAR MİLİMETREDİR/
OTHERWISE DIMENSIONS
MILLIMETERS
YÜZEY CİLASI/SURFACE FINISH:
TOLERANSLAR/TOLERANCES: ISO 2768-1 MEDIUM
DOĞRUSAL/LINEAR:
AÇISAL/ANGULAR:

KESKİN KENARLARI PAHLAYIN VE KIRIN

TARİH/DATE: / / REVİZYON/REVISION: 0



	İSİM/NAME	İMZA/SIGNATURE	TARİH/DATE
ÇİZEN/DRAWN	Semih ŞEN		16.03.2016
DENET./APPROVAL	Eyüp BAŞTAK		
ÜRET./PRODUCTION	Ünsal SİVRİ		
KALİTE/QUALITY	İsmail BAŞTAK		
G.M./G.M.	Şadi BAŞTAK		

SIRADAKİ İŞLEM/ NEXT OPERATION
Ambalaj

MALZEME/MATERIAL:
.....

AĞIRLIK/WEIGHT:.....

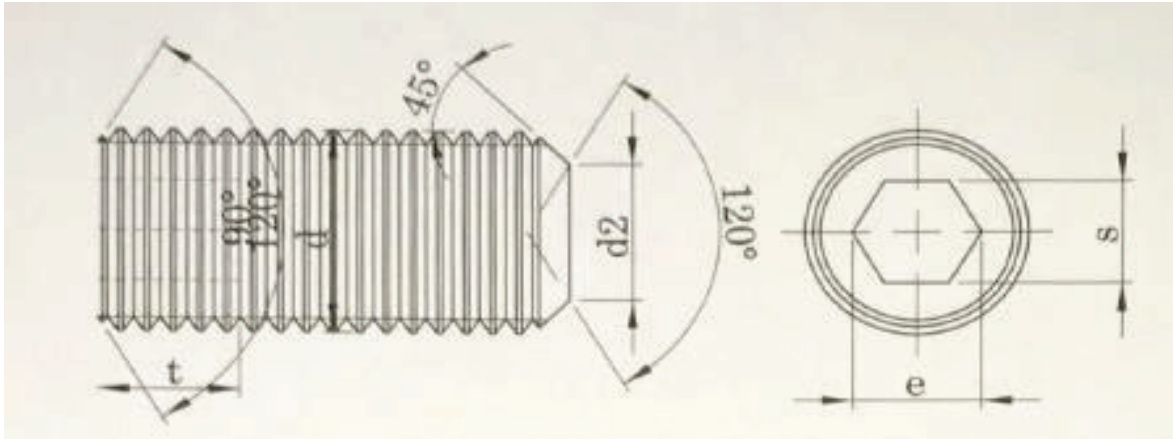
REŞİM NO./DWG NO: **9-200**

Başlık/Title: **Duvar Braketİ**

A4

ÖLÇEK/SCALE: SAYFA/PAGE:1

Double Side Bolt M16*50



Thread size / Anma çapı (d)		M6	M8	M10	M12	M16	M18	M20	M24
Pitch / Diş adımı	P	1,00	1,25	1,50	1,75	2,00	2,50	2,50	3,00
Cup point dia / Uç çapı	d2	3,00	5,00	6,00	8,00	10,00	12,00	14,00	16,00
	min.	2,75	4,70	5,70	7,64	9,64	11,57	13,57	15,57
	s	3,00	4,00	5,00	6,00	8,00	10,00	10,00	12,00
Head width / Anahtar ağızı	min.	3,02	4,02	5,02	6,02	8,03	10,03	10,03	12,03
	max.	3,08	4,10	5,10	6,10	8,12	10,12	10,12	12,14
Diagonal / Köşegen	e	2,80	3,80	4,00	4,80	6,40	7,20	8,30	10,00
Slot depth / Anahtar derinliği	t	3,50	5,00	6,00	8,00	10,00	11,00	12,00	15,00