

EUROSCAF® GÜVENLİ İSKELE SİSTEMİ  
EUROSCAF® FACADE SCAFFOLDING SYSTEM

GÜVENLİ İSKELELER  
GÜVENLİ ŞANTİYELER

SECURE SCAFFOLDERS

SAFE WORKSITES

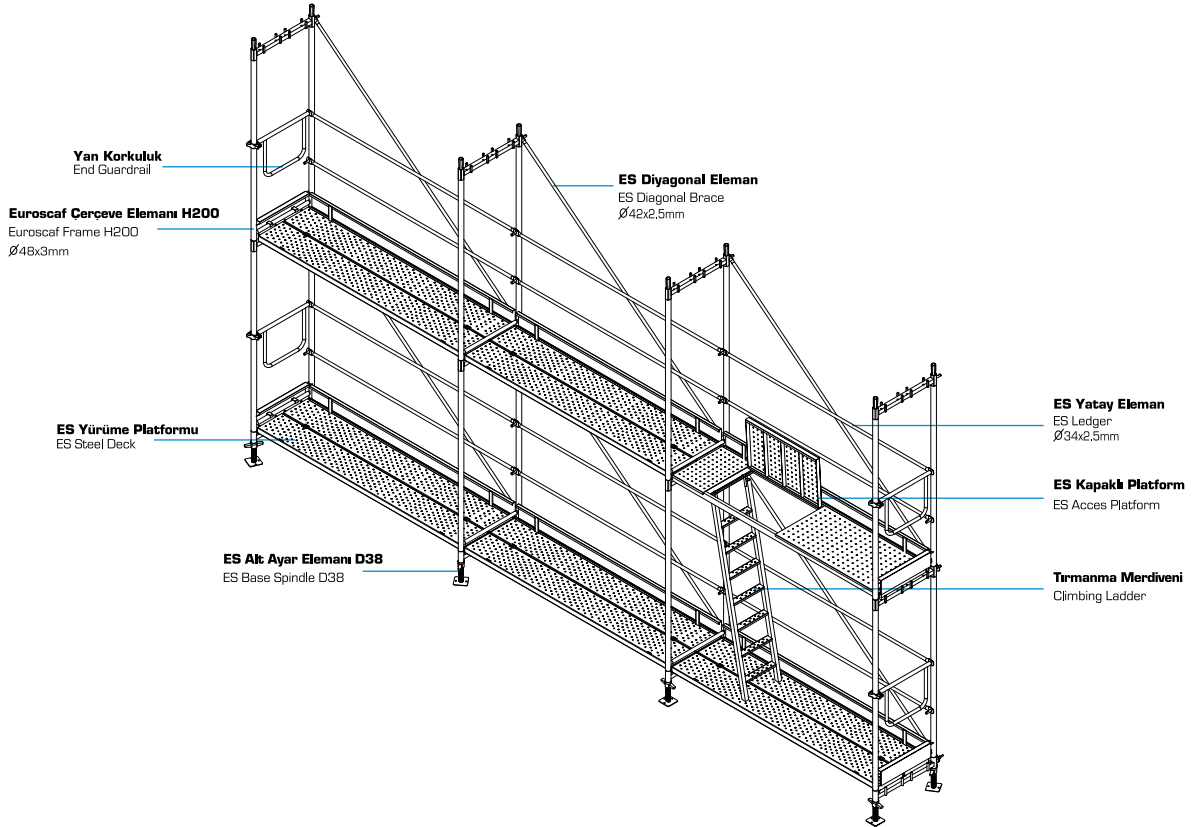


## EUROSCAF® GÜVENLİKLİ İSKELE SİSTEMİ

EUROSCAF® Güvenli Cephe İskele Sistemi; çerçeve elemanı, yatay-diyagonal eleman, yürüme platformları, kapaklı platformlar ve tozluk elemanlarından oluşur. Çerçevelerin birleştirilmesi için kullanılan çerçeve birleştirme elemanı ana gövdeye hidrolik presleme methodu ile boğma yapılarak kenetlenmiştir. Tüm sistem elemanları robotik kaynak hatlarında el değmeden kaynak yapılır. EUROSCAF® Güvenli Cephe İskele Sistemi 120 metre yüksekliğe kadar, duvar bağlantı elemanları ile duvara sabitlenerek güvenli kurulur.

## EUROSCAF® FACADE SCAFFOLDING SYSTEM

EUROSCAF® Safe Facade Scaffolding System is comprising from framework member, horizontal-diagonal member, walking platforms, access platforms and toe board members. The frame connection member, which used for connecting frames, is interlocked to main body with hydraulic pressing method and by making throttling. All these system members are welded in robotics welding lines and are untouched by human hands. EUROSCAF® Safe Façade Scaffolding System can be safely erected up to 120 m. height and by making wall fixing with wall connection members.



- Çerçeveler TS-EN 12810 ve 12811 normlarına uygun olarak  $048.3 \times 3 \text{ mm}$  çelik borulardan üretilir.
- Çerçeve birleştirme elemanı, çerçeveye hidrolik sistem boğma yapılarak kenetlenmiştir, deformasyon durumunda değiştirilebilir.
- Tüm sistem robotik hatta el değmeden kaynak yapılır.
- Her katta çelik yürüme platformları ile güvenli çalışma ortamları sağlar. Kapaklı platformlar ile kat geçiş emniyeti sağlar. Merdiven sistemi menteşeli ve katlanır aparatlıdır, kapaklı platform ile mono blok halde çalışır.
- Yürüme platformları güvenlik için ferfore delikli olarak üretilir. Yürüme platformları özel bağlantı kilidi ile sisteme güvenli bir şekilde monte edilir.

- Frames are produced with  $048.3 \times 3 \text{ mm}$  pipes according to the norms TS - EN 12810 and 12811.
- Frame connection component is riveted, not welded.
- Circular welds are carried out as fully welded by automatic welding robots.
- In every stage steel platforms, provides secure working environments with stair component, the top floors are reached easily.
- Steel decks are produced with perforated surface for safety steel decks have special connection hook for safe assembling.



054-7500760 04-6277786  
[www.out-door.co.il](http://www.out-door.co.il)

פיגומים בתקן אירופאי  
מכירה

קבוצת  
**OUTDOOR**



054-7500760 04-6277786  
[www.out-door.co.il](http://www.out-door.co.il)

פיגומים בתקן אירופאי  
מכירה

קבוצת  
**OUTDOOR**



054-7500760 04-6277786  
[www.out-door.co.il](http://www.out-door.co.il)

פיגומים בתקן אירופאי  
מכירה

קבוצת  
**OUTDOOR**



054-7500760 04-6277786  
[www.out-door.co.il](http://www.out-door.co.il)

פיגומים בתקן אירופאי  
מכירה

קבוצת  
**OUTDOOR**



054-7500760 04-6277786  
[www.out-door.co.il](http://www.out-door.co.il)

פיגומים בתקן אירופאי  
מכירה

קבוצת  
**OUTDOOR**

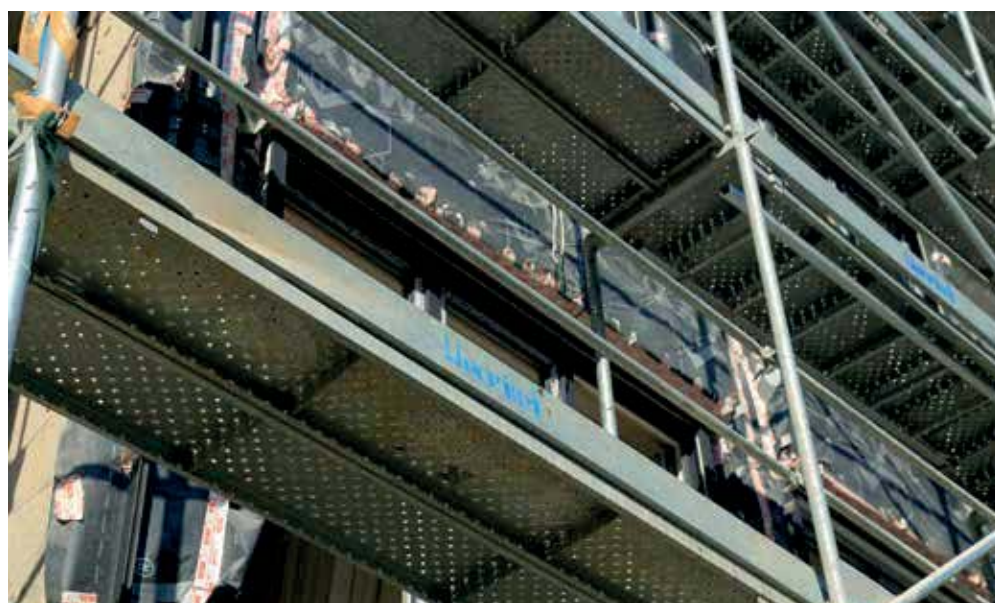


054-7500760 04-6277786  
[www.out-door.co.il](http://www.out-door.co.il)

פיגומים בתקן אירופאי  
מכירה

קבוצת  
**OUTDOOR**

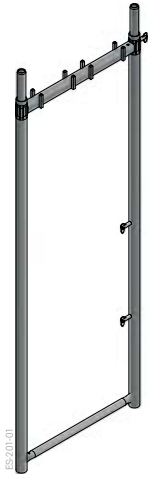




054-7500760 04-6277786  
[www.out-door.co.il](http://www.out-door.co.il)

פיגומים בתקן אירופאי  
מכירה

קבוצת  
**OUTDOOR**

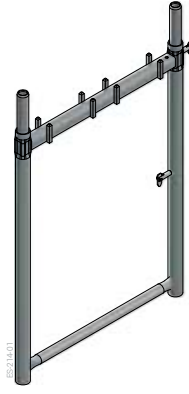


TS-EN 12810 ve 12811 normlarına uygun olarak üretilmektedir.  
Produced according to the norms TS-EN 12810 and 12811.

**EUROSCAF® Çerçeve Elemanı H200**  
**EUROSCAF® Frame H200**

30801909.999

10,70 kg

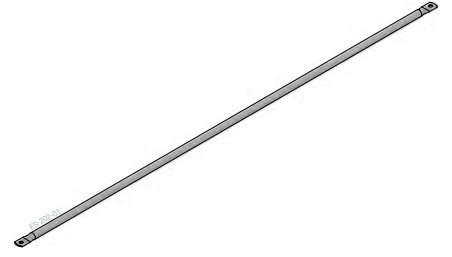


TS-EN 12810 ve 12811 normlarına uygun olarak üretilmektedir.  
Produced according to the norms TS-EN 12810 and 12811.

**EUROSCAF® Çerçeve Elemanı H100**  
**EUROSCAF® Frame H100**

30809619.999

10,90 kg

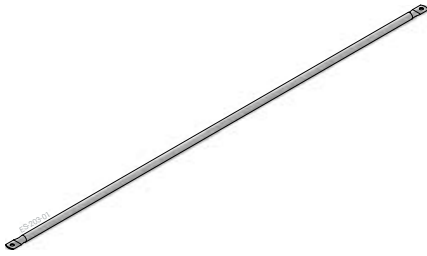


**ES Yatay Eleman**  
**ES Ledger**

30800939.100  
30800939.150  
30800939.200  
30800939.999

L = 1060 mm  
L = 1560 mm  
L = 2060 mm  
L = 2560 mm

1,95 kg  
2,90 kg  
3,80 kg  
4,70 kg

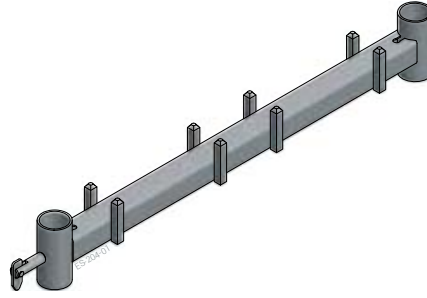


**ES Diyagonal Eleman**  
**ES Diagonal Brace**

30802229.100  
30802229.150  
30802229.200  
30802229.999

L = 2291 mm  
L = 2556 mm  
L = 2884 mm  
L = 3258 mm

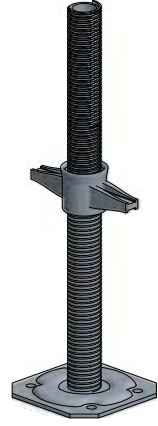
5,20 kg  
5,75 kg  
6,50 kg  
7,70 kg



**Alt Eşik Elemanı**  
**Supporter**

30801919.999

3,43 kg



50 cm'de güvenlik stoperi bulunmaktadır.

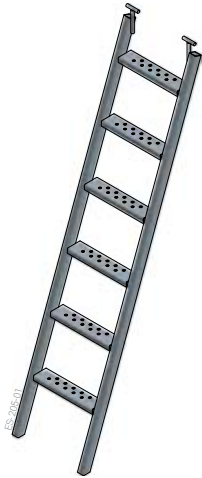
**Alt Ayar Elemanı D38**  
**Base Spindle D38**

Yüksek dayanım için taban plakası özel formlandır.  
Base plate has a special form for high strength

39804069.50  
39804069.75

L = 500 mm  
L = 750 mm

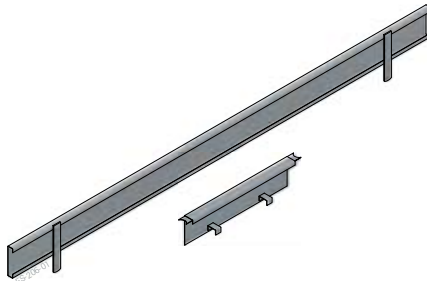
3,20 kg  
4,00 kg



**Tırmanma Merdiveni**  
**Climbing Ladder**

39804199.999

14,89 kg

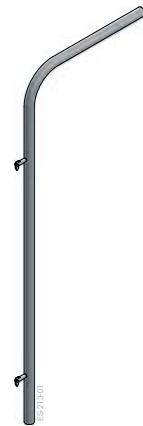


**Tozluk**  
**Toeboard**

30801929.70  
30801929.100  
30801929.150  
30801929.200  
30801929.250

L = 700  
L = 1000  
L = 1500  
L = 2000  
L = 2500

1,38 kg  
2,16 kg  
3,76 kg  
4,80 kg  
5,88 kg



**Çatı Bağlantı Elemanı**  
**Roof Connector**

30801949.999

8,90 kg

054-7500760 04-6277786  
www.out-door.co.il

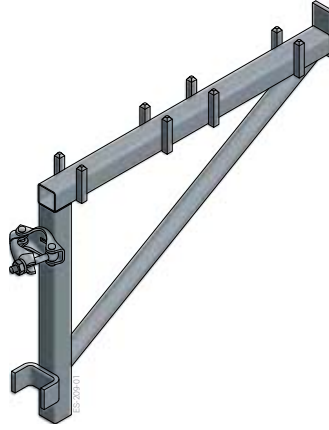
פיגומים בתקן אירופאי  
מכירה

קבוצת  
OUTDOOR



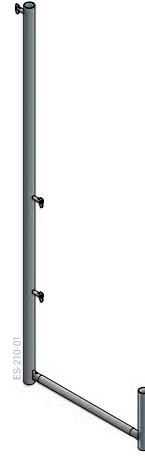
Yan Korkuluk  
End Guardrail

30802019.999 3,75 kg



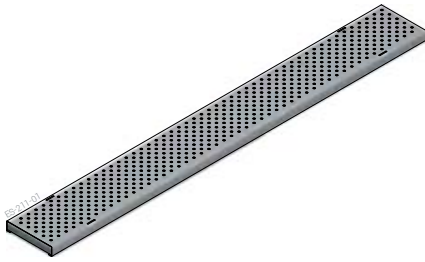
Konsol  
Bracket

30801959.30	L= 300 mm	3,83 kg
30801959.50	L= 500 mm	6,90 kg
30801959.75	L= 750 mm	10,00 kg



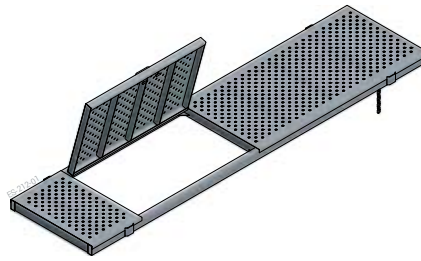
Konsol Korkuluğu  
Bracket Guardrail

30801969.100	L= 100	3,80 kg
30801969.200	L= 200	7,20 kg



ES Yürüme Platformu  
ES Steel Deck

30801979.100	L= 1000	7,25 kg
30801979.150	L= 1500	9,72 kg
30801979.200	L= 2000	14,50 kg
30801979.250	L= 2000	16,30 kg



ES Kapaklı Platform  
ES Acces Platform

30801989.999 31,50 kg



V TİPİ Duvar Bağlantı Takımı  
Wall Connector

39806629.40	L= 40	1,91 kg
39806629.50	L= 50	2,27 kg
39806629.60	L= 60	2,63 kg
39806629.75	L= 75	3,17 kg
39806629.100	L= 100	4,07 kg
39806629.120	L= 120	4,79 kg
39806629.150	L= 150	5,87 kg
39806629.200	L= 200	7,67 kg
39806629.250	L= 250	9,47 kg
39806629.300	L= 300	11,27 kg

MP Plastik Dübel M14x70  
MP Plastic Anchor M14x70

1120037.14 0,03 kg

MP Kanca Gözlü İskele Vidası  
MP Scaffolding Anchor With Eye

1120422.12.90	12 X 90	0,10 kg
1120422.12.120	12 X 120	0,14 kg
1120422.12.160	12 X 160	0,18 kg
1120422.12.190	12 X 190	0,22 kg
1120422.12.230	12 X 230	0,27 kg
1120422.12.300	12 X 300	0,35 kg
1120422.12.350	12 X 350	0,41 kg

Birdcage Projects



Stadium Projects



Cultural Buildings



High-Rise Buildings



Shipyard Industry



Infrastructure Projects



Residential Projects



Oil & Gas Industry



Industrial Projects

