

FLANGED

SCAFSET® FLANŞLI İSKELE SİSTEMİ
SCAFSET® FLANGED SCAFFOLDING SYSTEM

7בוצת
OUTDOOR

SCAFSET FLANŞLI İSKELE SİSTEMİ

Flanşlı İskele Sistemi döşeme altı taşıyıcı iskele olarak veya çeşitli yapılarda çalışma iskelesi olarak kullanılan bir iskele sistemidir. Yatay eleman, düşey eleman, yürüme platformu parçaları ile birçok aksesuardan oluşur. Bağlantılar dikey elemanlardaki flanşlara yatay elemanlardaki kurtağzı ve kamalarla bağlanır. Kurulumu, nakliyesi, stoklanması kolaydır. Yapı şekline göre kolayca şekillendirilebilir. Bu nedenle endüstriyel tesislerde, petrol rafinerilerinde, tersanelerde, inşaatlarda, eğlence sektörlerinde ve geçici tribün gereksinimi duyulan konser veya spor alanlarında tercih edilir. Sistem korozyona dayanıklı daldırma galvaniz yapılmaktadır. Scafset Flanşlı İskele Sistemi TS - EN 12810 normlarına uygun ve sertifikalı bir üründür.



8 noktadan aynı anda kitlenebilme özelliği

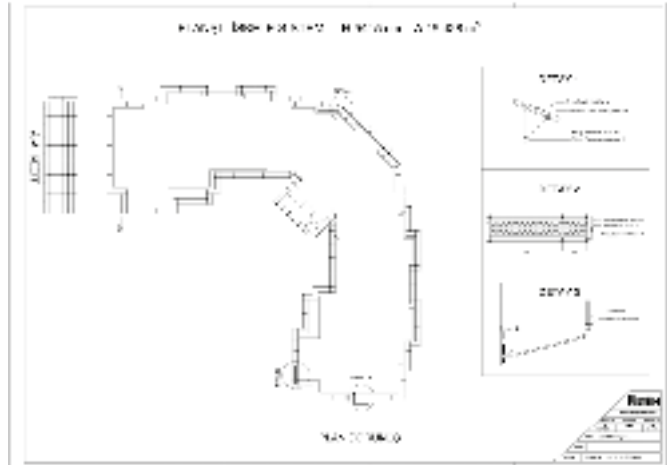
SİSTEM ÖZELLİKLERİ

- Flanşlı İskele Sistemi, yatay ve düşey elemanlardan oluşur.
- Flanşa yapılan bağlantı için herhangi bir elemana gerek yoktur. Burkulmayı önleyen çelik döküm başlıklar ile bağlantı yapılır.
- Tek bir çekiç darbesi ile kolayca kurulup sökülür. Bağlantı elemanı kullanılmadığı için zamandan, işçilikten ve maliyetten kazanılır.
- İstenilen yükseklikte ve genişlikte emniyetle kullanılabilir.
- Dikmeler 0.5 metre ile yatay eleman bağlandığında, 6 ton taşıma kapasitesine sahiptir.
- Kama uçlarına, kamanın çıkmasını engellemek için patlatma yapılmaktadır. Bu sayede aksesuar kaybolmaz ve güvenli bir kilitleme sağlanır.
- Yürüme platformları güvenlik için ferfore delikli olarak üretilir. Yürüme platformları özel bağlantı kilidi ile sisteme güvenli bir şekilde monte edilir.
- Her eleman gazaltı kaynak robotlarında otomatik olarak üretilir.
- Kamaların dizaynı sayesinde stoklama kolaydır.
- Sistem daldırma galvanizdir.

Yatay Eleman Aralığı Space between Horizontal Brace	Eksenel Yük Taşıma Kapasitesi Loading Capacity
0.5 m	6000 kg
1.00 m	5250 kg
1.50 m	4000 kg
2.00 m	2400 kg
2.50 m	1550 kg
3.00 m	1050 kg

SCAFSET FLANGED SCAFFOLDING SYSTEM

Flanged Scaffolding System is a system, which is used as a subfloor load bearing scaffolding or as working scaffolding in various constructions. It is comprising horizontal member, vertical member, moving platform parts and many accessories. The connections are made between flanges in vertical members and ledger ends and wedges in horizontal members. Its set-up, transport, storage is easy. It can be simply configured due to construction shape. Therefore, it is preferred in industrial facilities, petroleum refineries, shipyards, building constructions, entertainment industries and in concert halls or playfields, where temporary tribunes are needed. The system is built as corrosion resistant hot-dip galvanizing. Scafset Flanged Scaffolding System is a certified product, which is conformable with following norm: TS - EN 12810.



SYSTEM FEATURES

- Flanged Scaffolding System is composed of ledgers and standards.
- Connection to flanges is made with cast headings which prevents buckling.
- Assembly and dismantling with only a single hammer blow.
- Can be erected safely to desired heights and lengths.
- Rivets are used to avoid detachment of wedges, thus providing a safer locking mechanism and preventing accessories missing.
- Steel decks are manufactured with perforated surface for safety. Decks are fixed to the system in a more secure way using special connection hooks.
- All components are produced on fully automated robotic production lines.
- Special design of wedges facilitates an easier stacking.
- System is Hot dip galvanized.

Çap / Dia meter	48.3 mm	STEEL ST37
Kalınlık / Thickness	3.25 mm	
Kesit Alanı / Sectional Area	4.53 cm ²	
Ağırlık / Weight	3.60 kg/m	
Atalet Momenti / Moment of Inertia	11.60 cm ³	
Mukavemet Momenti / Moment Resistance	4.80 cm ³	
Burkulma Yarıçapı / Buckling Radius	1.60 cm	





054-7500760 04-6277786
www.out-door.co.il

פיגומים בתקן אירופאי
מכירה

קבוצת
OUTDOOR





054-7500760 04-6277786
www.out-door.co.il

פיגומים בתקן אירופאי
מכירה

קבוצת
OUTDOOR



054-7500760 04-6277786
www.out-door.co.il

פיגומים בתקן אירופאי
מכירה

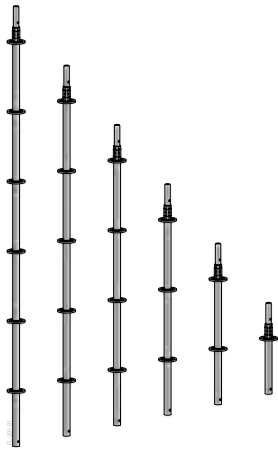
קבוצת
OUTDOOR



054-7500760 04-6277786
www.out-door.co.il

פיגומים בתקן אירופאי
מכירה

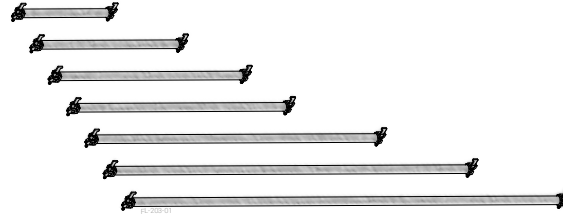
קבוצת
OUTDOOR



TS-EN 12810 ve 12811 normlarına uygun olarak üretilmektedir.
Produced according to the norms TS-EN 12810 and 12811.

Dikey Eleman Vertical Component

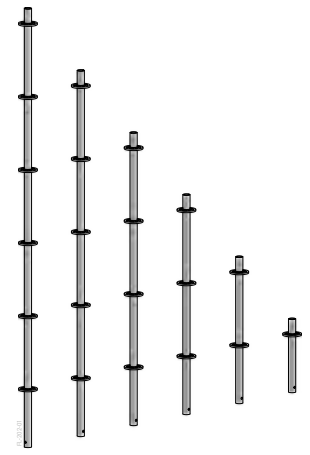
31401009.50	l=50cm ;1F	4,50 kg
31401019.100	l=100cm;2F	6,50 kg
31401029.150	l=150cm;3F	8,50 kg
31401039.200	l=200cm;4F	10,50 kg
31401049.250	l=250cm;5F	12,50 kg
31401059.300	l=300cm;6F	15,30 kg



Yatay elemanlar TS-EN 12810 ve TS-EN 12811 -1,2, 3 normlarına uygun olarak üretilmektedir.
Yatay elemanlar TS-EN 12810 ve TS-EN 12811 -1,2, 3 normlarına uygun olarak üretilmektedir.

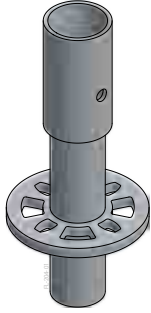
Yatay Eleman Tubular Ledger

	L	
31400939.73	732 mm	3,20 kg
31400939.109	1088 mm	4,40 kg
31400939.140	1400 mm	5,50 kg
31400939.157	1572 mm	5,90 kg
31400939.207	2072 mm	7,30 kg
31400939.257	2572 mm	8,60 kg
31400939.307	3072 mm	11,30 kg



Dikey Bitiş Elemanı Vertical End Component

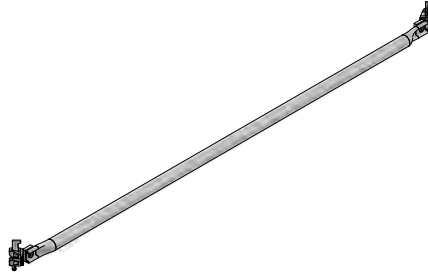
	L	
31406519.50	50 mm	2,25 kg
31406519.100	100 mm	4,50 kg
31406519.150	150 mm	6,75 kg
31406519.200	200 mm	9,00 kg
31406519.250	250 mm	11,24 kg
31406519.350	300 mm	13,49 kg



TS-EN 12810 ve 12811 normlarına uygun olarak üretilmektedir.
Produced according to the norms TS-EN 12810 and 12811.

Başlangıç Ayağı Base Collar

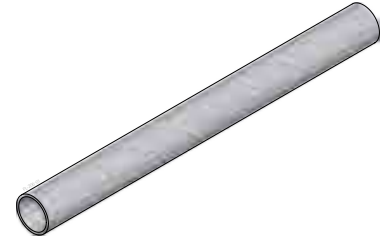
31402039.999	2,00 kg
--------------	---------



TS-EN 12810 ve 12811 normlarına uygun olarak üretilmektedir.
Produced according to the norms TS-EN 12810 and 12811.

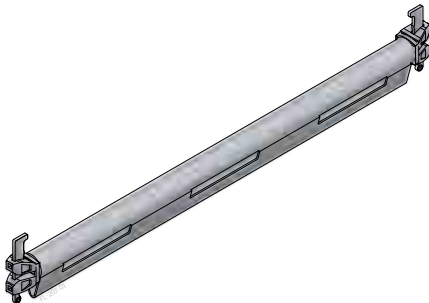
Diagonal Eleman-Dikey Vertical Diagonals

	L/H	
31402429.73	732 / 2000	7,30 kg
31402429.109	1088 / 2000	7,70 kg
31402429.140	1400 / 2000	8,10 kg
31402429.157	1572 / 2000	8,30 kg
31402429.207	2072 / 2000	9,20 kg
31402429.257	2572 / 2000	10,20 kg
31402429.307	3072 / 2000	11,40 kg
31402489.73	732 / 1000	4,7 kg
31402489.109	1088 / 1000	5,3 kg
31402489.140	1400 / 1000	5,9 kg
31402489.157	1572 / 1000	6,3 kg
31402489.207	2072 / 1000	7,5 kg
31402489.257	2572 / 1000	8,8 kg
31402489.307	3072 / 1000	10,1 kg



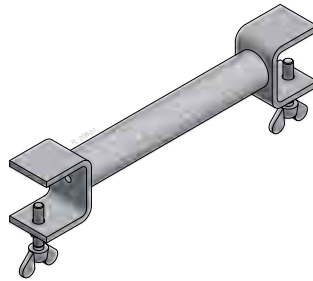
Kule Bağlantı Elemanı Ø48x3.2 mm Scaffolding Tube Ø48x3.2 mm

39804279.50	500 mm	1,78 kg
39804279.100	1000 mm	3,56 kg
39804279.150	1500 mm	5,33 kg
39804279.200	2000 mm	7,11 kg
39804279.250	2500 mm	8,89 kg
39804279.300	3000 mm	10,67 kg
39804279.350	3500 mm	12,45 kg
39804279.400	4000 mm	14,22 kg
39804279.450	4500 mm	16,00 kg
39804279.500	5000 mm	17,78 kg
39804279.550	5500 mm	19,56 kg
39804279.600	6000 mm	21,34 kg



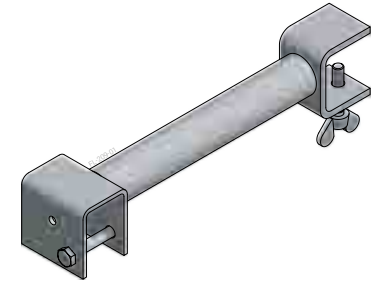
Güçlendirilmiş Yatay Reinforced Tubular Ledger

31436019.109	L= 1088	5,97 kg
31436019.140	L= 1400	7,63 kg



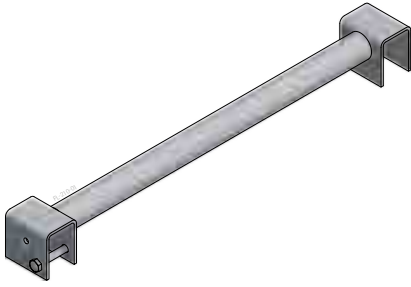
Transom Platform-Platform Transom SteelDeck & SteelDeck

31424039.32	L= 320	2,7 kg
31424039.64	L= 640	3,8 kg
31424039.96	L= 960	4,9 kg



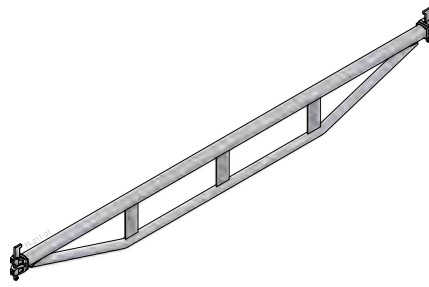
Transom Platform-Yatay Transom SteelDeck & Tubular Ledger

31424049.32	L= 320	2,7 kg
31424049.64	L= 640	3,8 kg
31424049.96	L= 960	4,9 kg



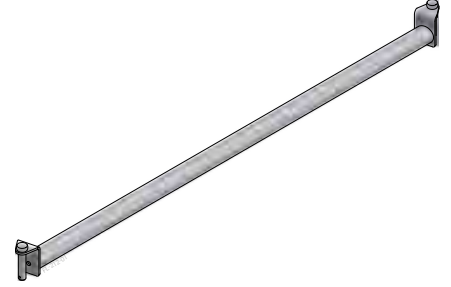
Transom Yatay-Yatay Transom Tubular Ledger & Transom Tubular Ledger

31424029.73	L= 732	3,76 kg
31424029.109	L= 1088	4,95 kg
31424029.140	L= 1400	6,00 kg
31424029.157	L= 1572	6,57 kg
31424029.207	L= 2072	8,24 kg
31424029.257	L= 2572	9,92 kg
31424029.307	L= 3072	11,59 kg



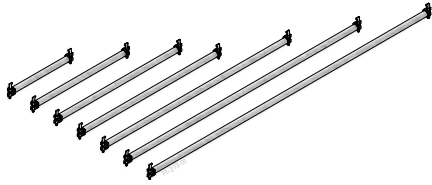
Yatay Makas Elemanı Double Tubular Ledger

31408019.157	L= 1572	9,30 kg
31408019.207	L= 2072	12,40 kg
31408019.257	L= 2572	15,30 kg
31408019.307	L= 3072	18,20 kg



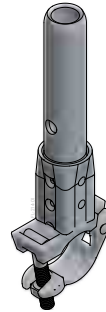
Yatay Diyagonal Elemanı Horizontal Diagonal Ledger With Pin

31435019.109	732 / 1088 mm	3,50 kg
31435019.140	732 / 1400 mm	4,20 kg
31435019.157	732 / 1572 mm	4,50 kg
31435019.207	732 / 2072 mm	5,70 kg
31435019.257	732 / 2572 mm	6,90 kg
31435019.307	732 / 3072 mm	8,10 kg
31435029.140	1088 / 1400 mm	4,60 kg
31435029.157	1088 / 1572 mm	5,00 kg
31435029.207	1088 / 2072 mm	6,00 kg
31435029.257	1088 / 2572 mm	7,10 kg
31435029.307	1088 / 3072 mm	18,30 kg
31435039.157	1400 / 1572 mm	5,40 kg
31435039.207	1400 / 2072 mm	6,40 kg
31435039.257	1400 / 2572 mm	7,40 kg
31435039.307	1400 / 3072 mm	8,60 kg
31435049.207	1572 / 2072 mm	6,60 kg
31435049.257	1572 / 2572 mm	7,70 kg
31435049.307	1572 / 3072 mm	8,70 kg
31435059.257	2072 / 2572 mm	8,40 kg
31435059.307	2072 / 3072 mm	9,40 kg
31435069.307	2572 / 3072 mm	10,10 kg



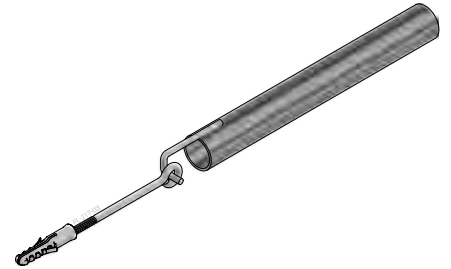
Yatay Gönye Elemanı Horizontal Diagonal Ledger

31405119.103	732 / 732 mm	4,59 kg
31405169.153	1088 / 1088 mm	6,19 kg
31405219.198	1400 / 1400 mm	7,69 kg
31405289.222	1572 / 1572 mm	8,49 kg
31405339.293	2072 / 2072 mm	10,89 kg
31405389.363	2572 / 2572 mm	13,29 kg
31405419.434	3072 / 3072 mm	15,59 kg



Kelepçeli Dikey Boru Bağlantı Elemanı Vertical Connection Element With Coupler

31427019.999		1,50 kg
--------------	--	---------



V TİPİ Duvar Bağlantı Takımı Wall Connector

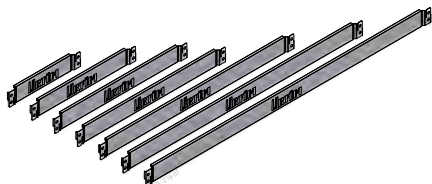
39806629.40	L= 40	1,91 kg
39806629.50	L= 50	2,27 kg
39806629.60	L= 60	2,63 kg
39806629.75	L= 75	3,17 kg
39806629.100	L= 100	4,07 kg
39806629.120	L= 120	4,79 kg
39806629.150	L= 150	5,87 kg
39806629.200	L= 200	7,67 kg
39806629.250	L= 250	9,47 kg
39806629.300	L= 300	11,27 kg

MP Plastik Dübel M14x70 MP Plastic Anchor M14x70

1120037.14		0,03 kg
------------	--	---------

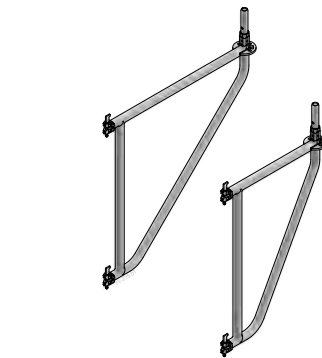
MP Kanca Gözlü İskele Vidası MP Scaffolding Anchor With Eye

1120422.12.90	12 X 90	0,10 kg
1120422.12.120	12 X 120	0,14 kg
1120422.12.160	12 X 160	0,18 kg
1120422.12.190	12 X 190	0,22 kg
1120422.12.230	12 X 230	0,27 kg
1120422.12.300	12 X 300	0,35 kg
1120422.12.350	12 X 350	0,41 kg



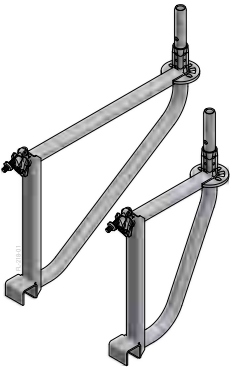
Tozluk Toe Board

31401929.73	L= 732	1,90 kg
31401929.109	L= 1088	2,60 kg
31401929.140	L= 1400	3,10 kg
31401929.157	L= 1572	3,40 kg
31401929.207	L= 2072	4,40 kg
31401929.257	L= 2572	5,30 kg
31401929.307	L= 3072	6,20 kg



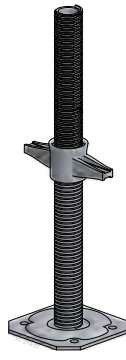
Konsol Bracket

31401089.73	L= 732 mm	11,90 kg
31401089.109	L= 1088 mm	18,30 kg



Çıkma Konsolu
Bay Bracket

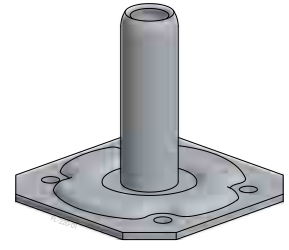
31402049.39 L= 390 mm 7,20 kg
31402049.73 L= 732 mm 9,10 kg



25 cm'de güvenlik stoperi bulunmaktadır.
Safety stop in 25 cm.

Alt Ayar Eleman D38
Base Spindle D38

39833019.50 L= 500 mm 3,20 kg
39833019.75 L= 750 mm 4,00 kg



Alt Plaka D38
Base Plate D38

30434019.999 1,00 kg



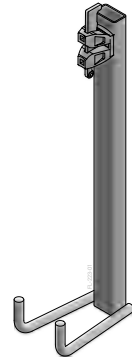
Mafsallı Alt Ayar Elemanı D38
Hinged Base Spindle D38

39804479.50 L= 500 5,10 kg
39804479.75 L= 750 5,90 kg



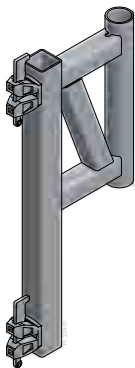
Tekerlekli Alt Ayar Elemanı D38
Castor Base Spindle D38

39804469.50 L= 500 10,00 kg
39804469.75 L= 750 10,80 kg



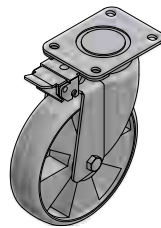
Taşıma Askısı
Transportation Hanger

31438019.999 L= 695 4,00 kg



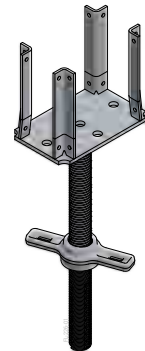
Yürüme Adaptörü
Transportation Adaptor

31437019.999 L= 590 6,57 kg



Tekerlek
Caster

4090210.200 6,87 kg

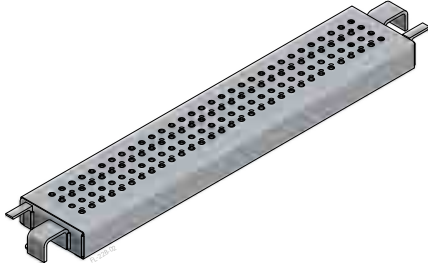


25 cm'de güvenlik stoperi bulunmaktadır.
Safety stop in 25 cm.

Çift Yollu Ayar Elemanı D38
Four Ways Head Spindle D38

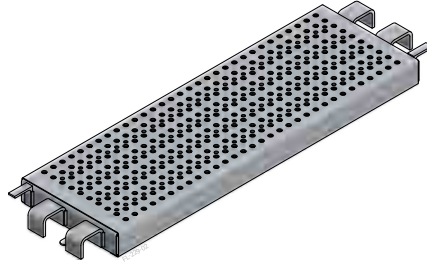
Tek veya çift H20 için stabiliteyi sağlar.
Provides stable support for single or twin H20 Girder

39804079.50 L= 500 mm 3,20 kg
39804079.75 L= 750 mm 4,00 kg



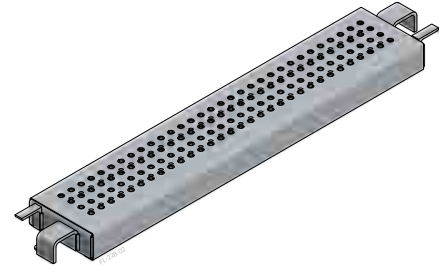
Yürüme Platformu (H= 19 cm ; L= 1,5 mm)
Steel Deck (H= 19 cm ; L= 1,5 mm)

39830329.73	L= 732 mm	4,70 kg
39830329.109	L= 1088 mm	6,30 kg
39830329.140	L= 1400 mm	7,60 kg
39830329.157	L= 1572 mm	8,40 kg
39830329.207	L= 2072 mm	10,60 kg
39830329.257	L= 2572 mm	12,70 kg
39830329.307	L= 3072 mm	14,90 kg



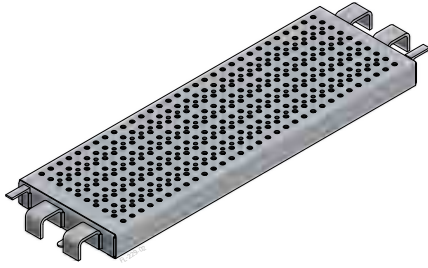
Yürüme Platformu (H= 32 cm ; L= 1,5 mm)
Steel Deck (H= 32 cm ; L= 1,5 mm)

39830029.73	L= 732 mm	7,00 kg
39830029.109	L= 1088 mm	9,10 kg
39830029.140	L= 1400 mm	11,00 kg
39830029.157	L= 1572 mm	12,00 kg
39830029.207	L= 2072 mm	14,90 kg
39830029.257	L= 2572 mm	17,90 kg
39830029.307	L= 3072 mm	20,80 kg



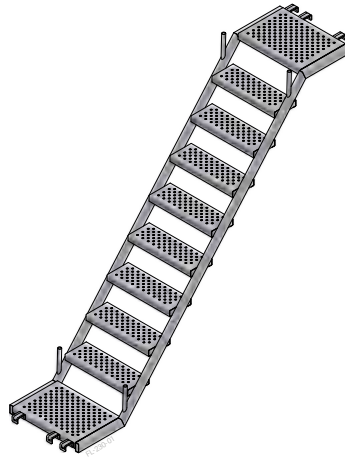
Yürüme Platformu (H= 19 cm ; L= 2 mm)
Steel Deck (H= 19 cm ; L= 2 mm)

39830319.73	732 mm	5,70 kg
39830319.109	1088 mm	7,70 kg
39830319.140	1400 mm	9,50 kg
39830319.157	1572 mm	10,50 kg
39830319.207	2072 mm	13,40 kg
39830329.257	2572 mm	16,30 kg
39830319.307	3072 mm	19,20 kg



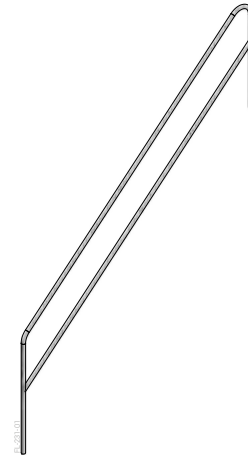
Yürüme Platformu (H= 32 cm ; L= 2 mm)
Steel Deck (H= 32 cm ; L= 2 mm)

39830019.73	732 mm	8,30 kg
39830019.109	1088 mm	11,10 kg
39830019.140	1400 mm	13,50 kg
39830019.157	1572 mm	14,90 kg
39830019.207	2072 mm	18,80 kg
39830019.257	2572 mm	22,70 kg
39830019.307	3072 mm	26,70 kg



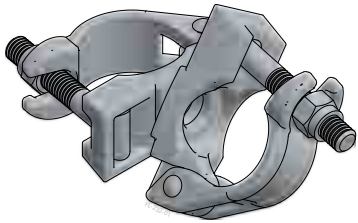
Merdiven
Ladder

	L	H	
39809129.257.200	2000 mm	2572 mm	61,20 kg
39809129.257.150	1500 mm	2572 mm	55,00 kg
39809129.207.150	1500 mm	2072 mm	50,00 kg



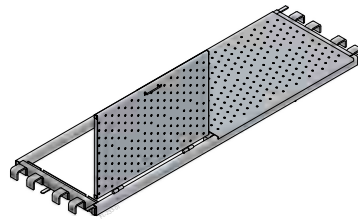
Merdiven Korkuluğu
Ladder Guardrail

	L	H	
39809229.200	2000 mm	2572 mm	12,00 kg
39809229.150	1500 mm	2572 mm	10,80 kg
39809229.150	1500 mm	2072 mm	9,20 kg



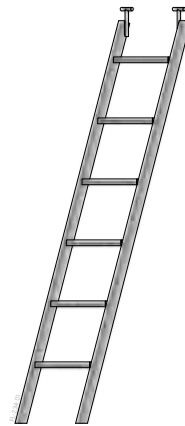
Hareketli Boru Kelepçesi 48/48
Swivel Coupler 48/48

4030006.999	1,30 kg
4030026.999	1,50 kg
4030027.999	1,70 kg



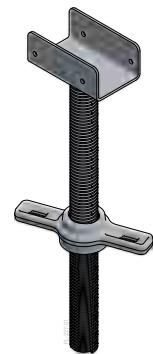
Kapaklı Platform
Access Platform

31401989.257	L= 2572	39,00 kg
31401989.307	L= 3072	46,00 kg
31401989.207	L= 2072	32,00 kg



Tırmanma Merdiveni
Climbing Ladder

39804199.999	14,17 kg
--------------	----------



25 cm'de güvenlik stoperi bulunmaktadır.
Safety stop in 25 cm.

U Başlıklı Üst Ayar Elemanı D38
U Head Spindle D38

39804089.50	L= 500 mm	3,13 kg
39804089.75	L= 750 mm	3,97 kg